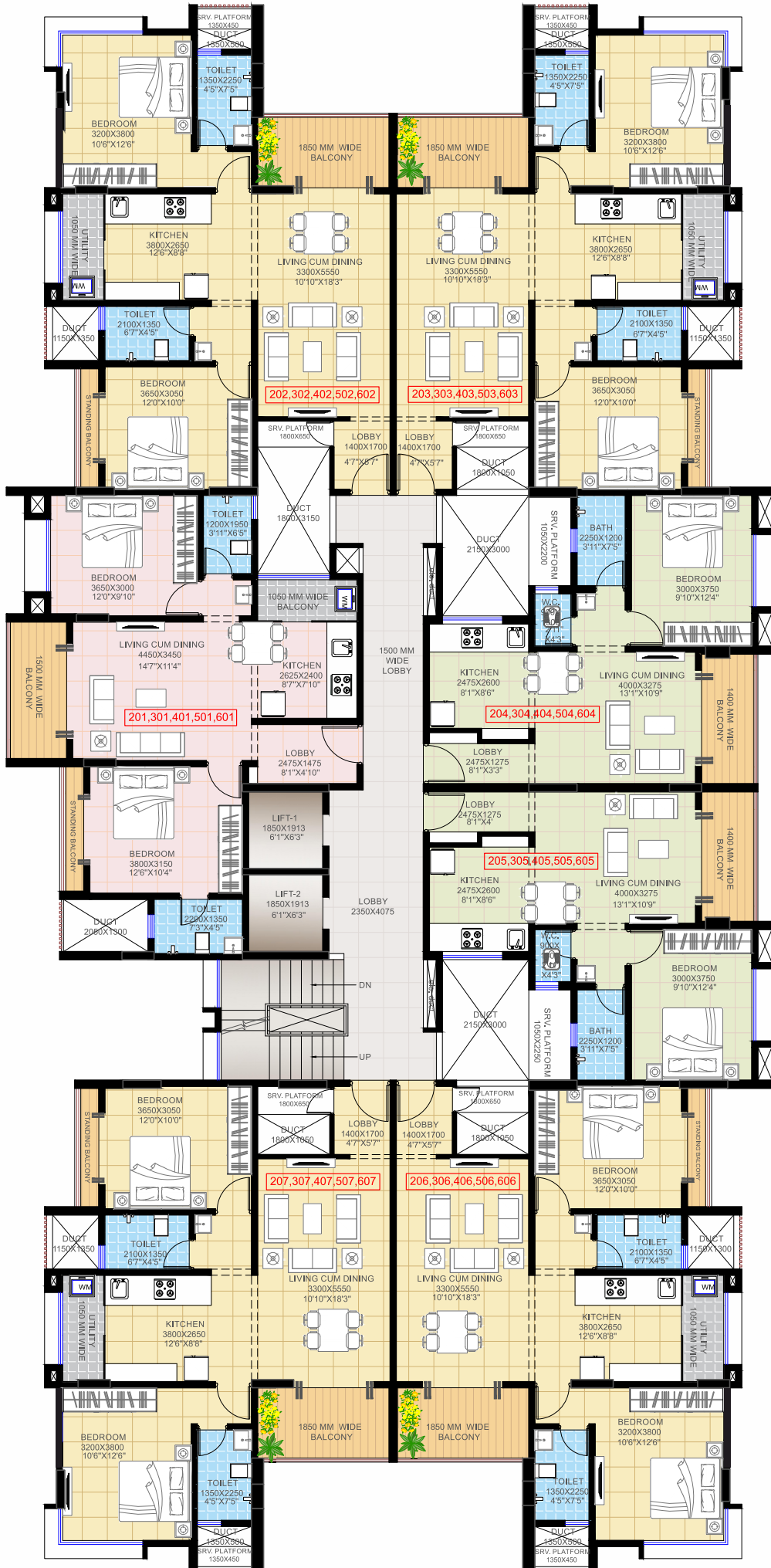




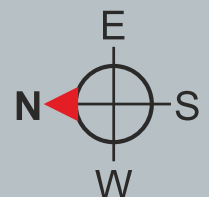
**VISHWAKARMA**  
**ARVIND RESIDENCY**  
2 BHK Flats



Site : Vishwakarma Arvind Residency, Near Kriplani Hospital, Tarabai Park, Kolhapur



# Typical Second to Sixth Floor Plan



9 Meter Wide Road



“Experience  
Opulent Living in the Heart of  
Kolhapur at Tarabai Park -  
Luxurious 2 BHK Flats  
with Proximity to  
City Essentials!”

Indulge in the epitome of opulence at our luxurious residences. Nestled in the prestigious heart of Kolhapur – Tarabai Park. Immerse yourself in the seamless blend of sophistication and convenience, as these residences redefine urban living.

Enjoy the convenience of having all necessities within walking distance – from verdant gardens to upscale hotels, and even the bus stand and railway station in close proximity.

Embrace a life of comfort and elegance, surrounded by the vibrancy of the city. Welcome home to the pinnacle of luxury in the heart of Kolhapur.





**VISHWAKARMA**  
**ARVIND RESIDENCY**  
2 BHK Flats

**Luxury  
Living  
at the  
Heart of  
the City**

**Luxurious  
Residential  
Flats  
in an  
Exclusive  
Urban Oasis**



For Bookings :  
**9673545050 / 7320962020**



MahaRera  
Registration No.  
P53000054810



Member :  
**CREDAI**  
KOLHAPUR



[www.vishwakarmabuilders.com](http://www.vishwakarmabuilders.com)

A brochure is a imaginary concept of proposed building/Project. Information contained in this brochure about amenities, furniture is indicative. The developers reserve a right to cancel or provide the said amenities in certain contingency.